

2008 Springville Pond Aquatic Plant Management Strategies

Prepared by J. Mumm and N. Turyk
UWSP Center for Watershed Science and Education

On January 10, 2008, the Village of Plover Springville Pond sub-committee met with representatives from WDNR, UWSP, and Golden Sands RC&D to discuss strategies for EWM control in 2008. The following aquatic plant management strategies were agreed upon. Details regarding each treatment can be found in the document *Aquatic Plant Management Plan for Springville Pond, Portage County, March 2007*.

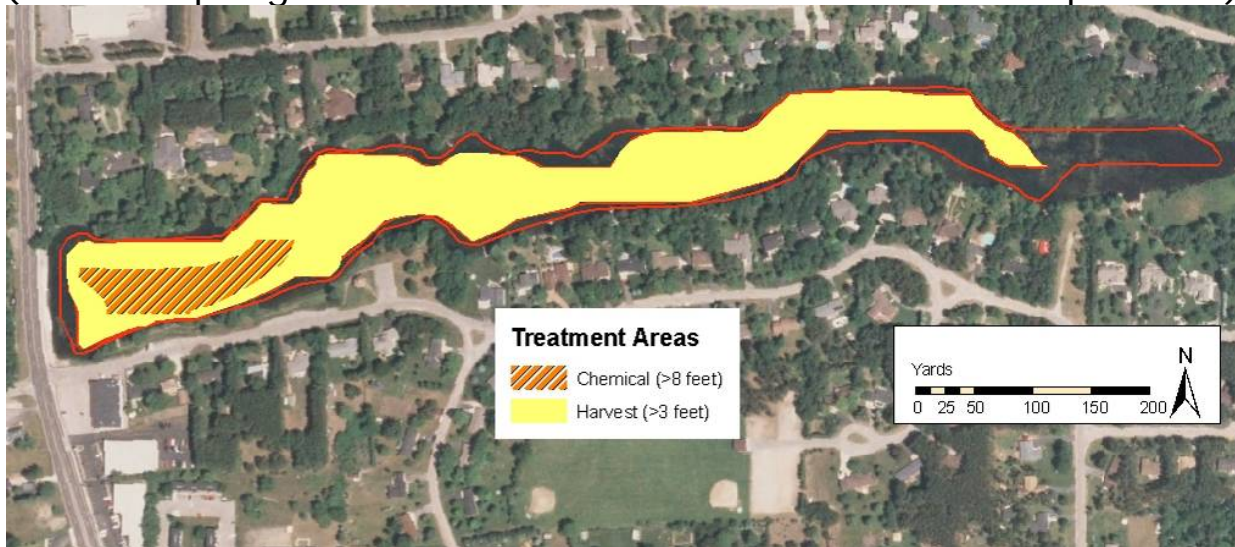
- Total Treatment Area should not exceed 50% of the lake
- EWM Controls
 - Chemical
 - Spring 2008 DNR will monitor EWM to determine if chemical application is warranted.
 - Based on DNR evaluation and approval, Weedar 64 can be applied in the west end (water depths greater than 8 feet) in early spring. (see map below)
 - Harvesting
 - Harvesting can continue as a control for EWM and nuisance level native plants in water depths greater than 3 feet (see map below).
 - Harvesting is to be done on an as needed basis.
 - Hand pulling
 - To gain control of EWM in the middle of the Pond, hand pulling of EWM should take place in mid-June and mid-July to remove roots along with the rest of the plant.
- Flowering Rush
 - Remove new invasive species Flowering Rush in Spring 2008 when flowering.
 - J. Gifford is taking the lead on this.

- Weevils
 - If there were efforts to enhance weevil populations it is recommended on the east end of the Pond where other treatments can not be used; however, no plans to enhance the weevil population were made. It was determined that there is too much disturbance with chemical treatment, harvesting, and the possibility of dredging on the east end in the near future.
- Aquatic plant surveys
 - UWSP will map curly leaf pondweed (*p. crispus*) beds in June to begin tracking the abundance of this invasive plant in the Pond.
 - UWSP will conduct annual aquatic plant survey in August.
- Meetings/Review
 - Springville should meet at Springville Pond in August to observe the current situation.
 - Springville Pond subcommittee members, UWSP, and WDNR should meet in fall to review the 2008 data and develop strategies for 2009.



A new depth map was created for Springville Pond from depths measured during the 2007 aquatic plant survey. This information was used in the map below to guide appropriate areas for chemical application and potential harvesting areas. The area of each type of treatment is displayed in the table below. The actual total treatment area must be less than 50% of the Pond.

Potential Chemical Treatment Zone (2008)
 (Area of Springville Pond with new contour lines from depth data)



Treatment	Surface Area (acres)	% Lake Effected
Harvest (area greater than 3' deep)	10.6	56.7
Chemical Application (area greater than 8' deep)	1.4	7.5